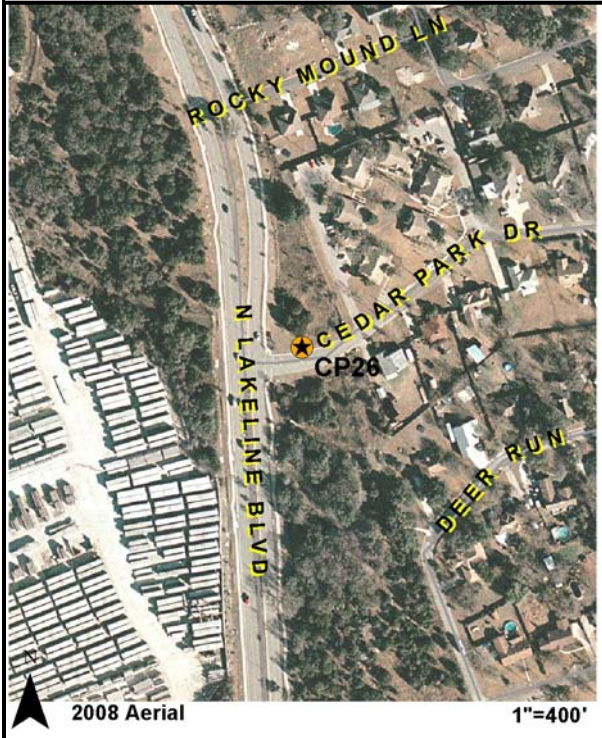




GPS MONUMENT 26

DATE: April, 2009

HORIZONTAL DATUM NAD 83/93 HARN SPC ZONE 4203/TEXAS CENTRAL US SURVEY FEET	VERTICAL DATUM NAVD 88 US SURVEY FEET
NORTHING (Y): 10157280.46	NAVD '88 ELEVATION: 1006.44
EASTING (X): 3079062.39	
LATITUDE (N): 30°-30'-29.2730"	
LONGITUDE (W): 97°-50'-53.9298"	
DESCRIPTION OF MONUMENT: 3" Brass disk in concrete. Standing on north ROW of Cedar Park Dr., east of N. Lakeline Blvd., looking west.	



Photograph of the monument site showing a surveying instrument on a tripod and a pink survey marker in the foreground. A stop sign and street sign are visible in the background.