



Project Overview

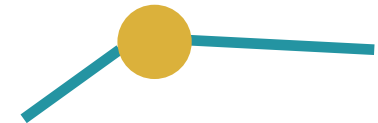
New 8' to 10' wide concrete shared-use trail along the north fork of Brushy Creek

3

Approximately 3 miles long



Starts near West Parmer Lane (FM 734) and East Whitestone Boulevard (RM 1431) and extends south



Will connect with the existing Brushy Creek Regional Trail near Brushy Creek Road, as part of the regional trail system



Project Overview

Identified in the 2010 Hike and Bike Trails Master Plan and 2015 Parks & Open Space Master Plan

Project began as a recommendation from the PACE Board’s Hike & Bike Subcommittee

Submitted to Capital Area Metropolitan Planning Organization (CAMPO) Call for Projects in 2017

2022

Design underway with construction anticipated to start in fall 2022

\$2,672,408

CAMPO allocated \$2,672,408 in Federal funds for trail construction



City covering engineering design and related pre-construction services



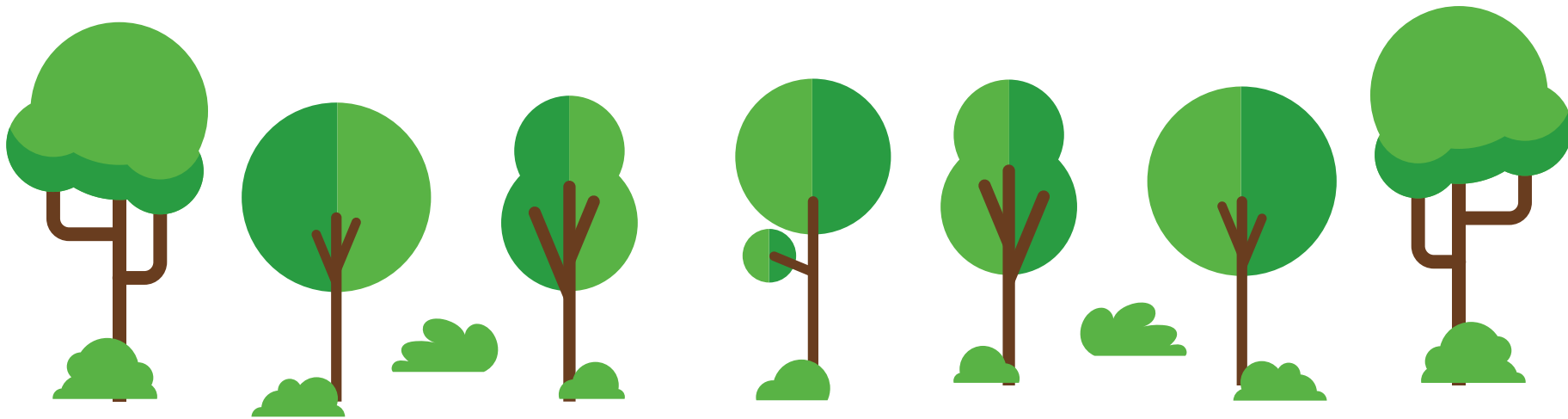
Project Overview

Because this is Federally-funded the City must comply with all Federal standards:

- Protection of endangered species, and cultural/archeological resources
- Minimize impact to trees and other environmental features along the trail route

The city will field-engineer much of this project

- Engineers on the ground guiding contractor as project is constructed
- Helps minimize any environmental, ecological and historical impacts





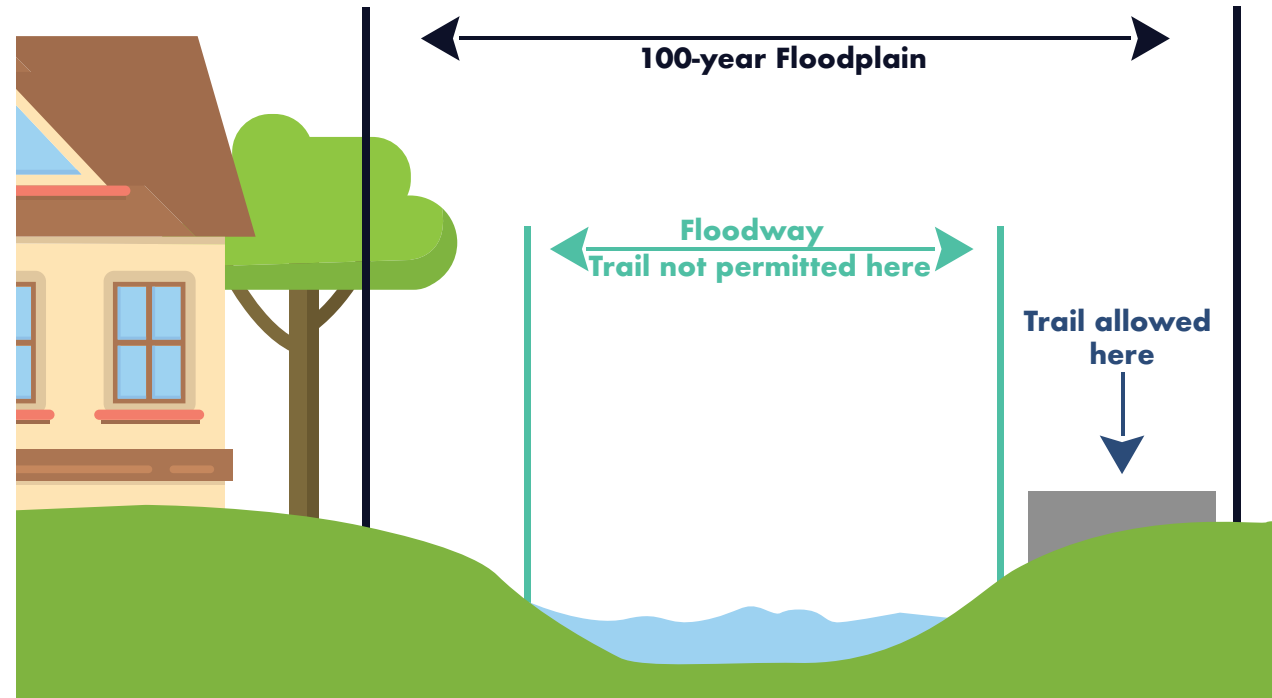
Project Overview

Size and material constraints

- Our federal funding requires this shared-use path/trail is 8-to-10 feet wide, constructed of concrete

Location constraints

- While the trail can (and in many places will be) constructed in floodplain, it cannot be constructed in floodway



Floodway: the channel of a river or stream and the adjacent land that must remain free from development

Floodplain: low-lying land adjacent to a river or stream, subject to flooding