

Session Name: New Session 1-28-2015 8-19 PM (1)

Date Created: 1/28/2015 6:07:46 PM

Active Participants: 144 of 144

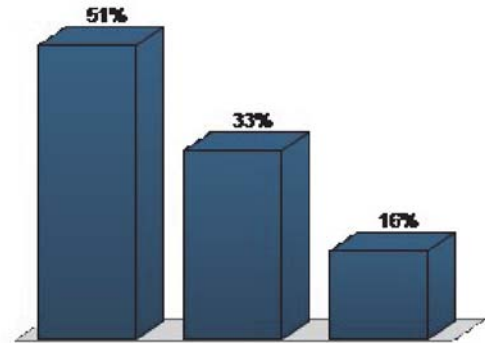
Average Score: 0.00%

Questions: 18

Results by Question

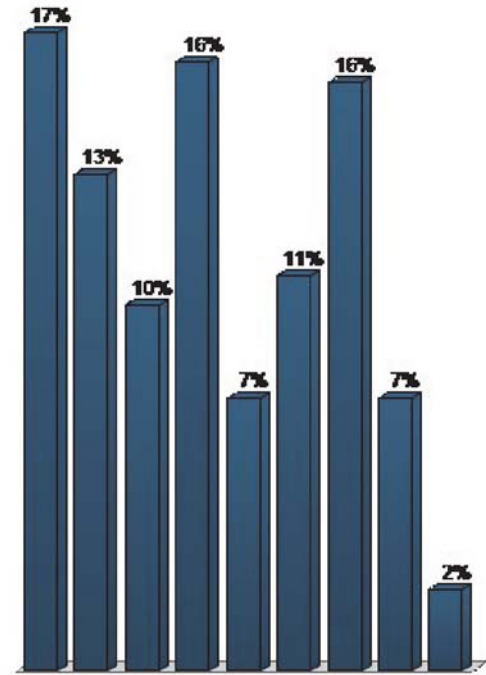
1. Who do you think is going to win the Superbowl? (choose one): (Multiple Choice)

Responses		
	Percent	Count
Seahawks	51.46%	53
Patriots	33.01%	34
I don't watch football	15.53%	16
Totals	100%	103



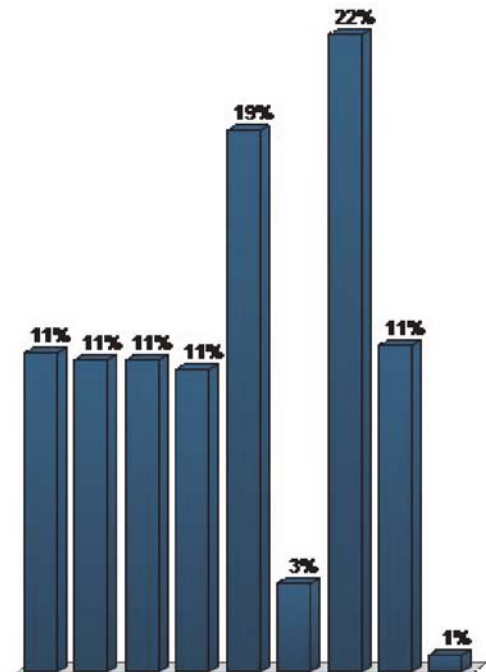
2. My connection to Bell Boulevard is the following (choose all that apply): (Multiple Choice - Multiple Response)

Responses		
	Percent	Count
Live nearby	17.17%	63
Live in Cedar Park (not immediately near Bell Blvd)	13.35%	49
Work here	9.81%	36
Property owner	16.35%	60
Business owner	7.36%	27
Commute through	10.63%	39
Use civic amenities (church, library, parks, etc.)	15.8%	58
Member of the real estate community at large	7.36%	27
Other – please fill out a comment card	2.18%	8
Totals	100%	367



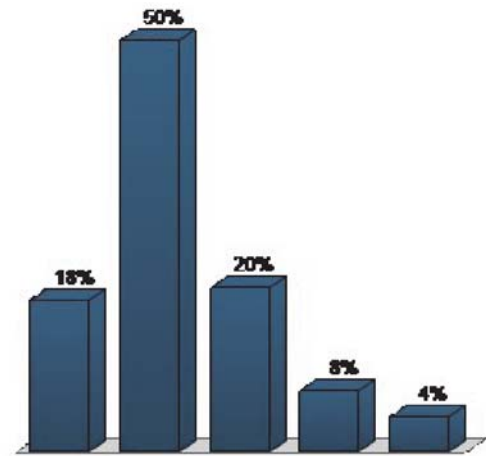
3. If improvements were to take place along the Bell Blvd corridor what are the most important issues to address? (choose your top three): (Multiple Choice - Multiple Response)

	Responses	
	Percent	Count
Create a gathering place for the community	11.17%	40
Maintain or improve vehicular mobility (ability to move smoothly through the area)	10.89%	39
Improve pedestrian accessibility	10.89%	39
Improve vehicular accessibility (ability to move off the road into the surrounding developments and neighborhoods)	10.61%	38
Improve visual aesthetics	18.99%	68
Enhance regional connectivity	3.07%	11
Energize the corridor (i.e. activities, destination retail, restaurants, etc.)	22.35%	80
Realize a return on investment for land and business owners and the City	11.45%	41
Other – please fill out a comment card	0.56%	2
Totals	100%	358



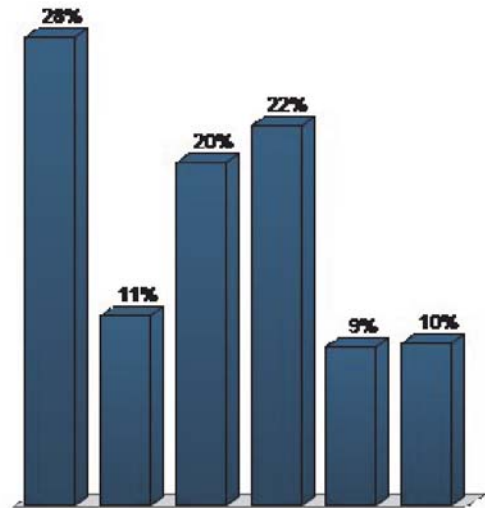
4. Do you agree that we are looking at the right benchmarks? (choose one): (Multiple Choice)

Responses		
	Percent	Count
Strongly agree	18.33%	22
Agree	50%	60
Neutral	20%	24
Disagree	7.5%	9
Strongly disagree	4.17%	5
Totals	100%	120



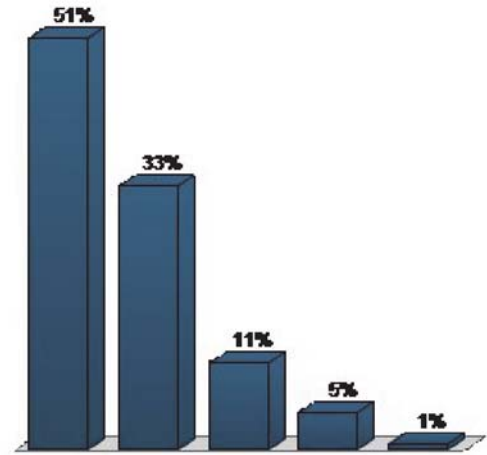
5. I believe the most important goals to focus on are... (choose three): (Multiple Choice - Multiple Response)

	Responses	
	Percent	Count
Create an economically vibrant corridor and energize the greater Cedar Park region.	27.52%	101
Generate return on investment for the City of Cedar Park and private business	11.17%	41
Work with natural and historical assets to define a more pleasant human experience.	20.16%	74
Maintain mobility and accommodate traffic levels while increasing access.	22.34%	82
Gain support from affected stakeholders including land owners, developers, and business owners.	9.26%	34
Solidify what the identity of Cedar Park is through the master planning process.	9.54%	35
Totals	100%	367



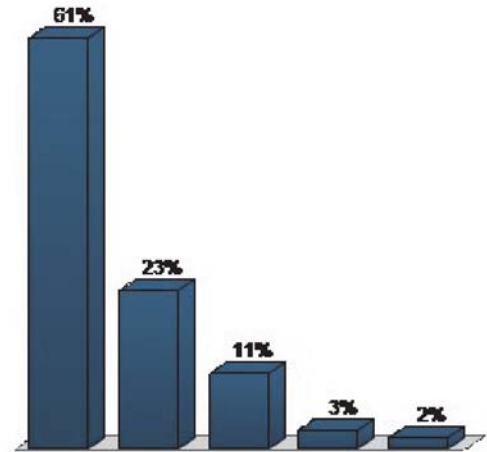
6. How important is it to you to create an economically vibrant corridor and energize the greater Cedar Park region? (choose one): (Multiple Choice)

Responses		
	Percent	Count
Very important	51.15%	67
Important	32.82%	43
Neutral	10.69%	14
Not that important	4.58%	6
Not important at all	0.76%	1
Totals	100%	131



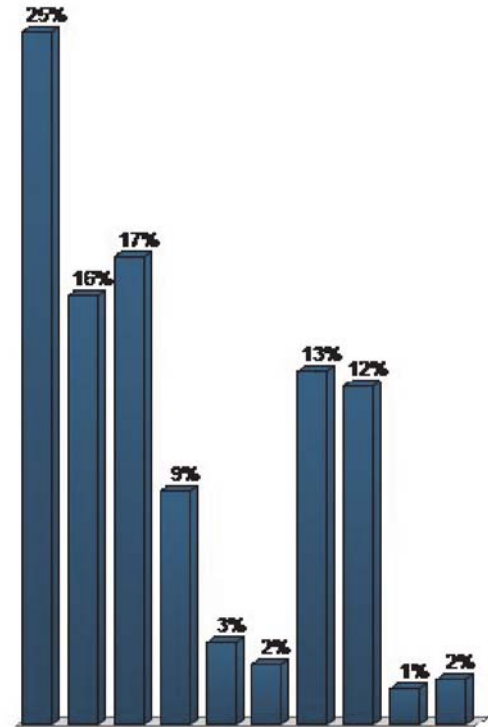
7. As a tax payer how important is it to you to generate return on investment for the City of Cedar Park and private business? (choose one): (Multiple Choice)

Responses		
	Percent	Count
Very important	60.87%	70
Important	23.48%	27
Neutral	11.3%	13
Not that important	2.61%	3
Not important at all	1.74%	2
Totals	100%	115



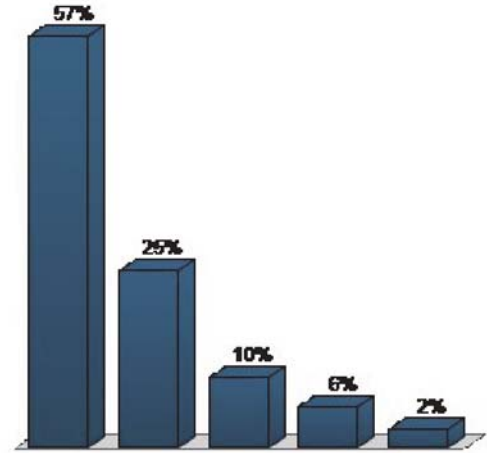
8. I believe the most important physical challenges along Bell Boulevard are (choose three): (Multiple Choice - Multiple Response)

	Responses	
	Percent	Count
Vehicular mobility	25.27%	92
Driveways and grading	15.66%	57
Pedestrian and bicycle mobility	17.03%	62
Parking	8.52%	31
Flooding/stormwater management	3.02%	11
Lighting	2.2%	8
Accessibility to parks and open space	12.91%	47
Burying power lines	12.36%	45
Insufficient communications infrastructure	1.37%	5
Other – please fill out a comment card	1.65%	6
Totals	100%	364



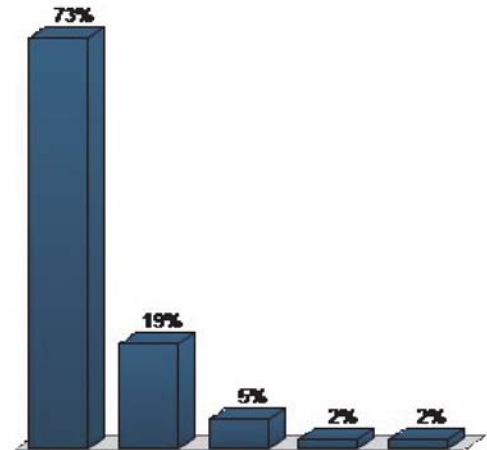
9. How important is it to you to preserve or enhance natural and historical assets to define a more pleasant human experience? (choose one): (Multiple Choice)

	Responses	
	Percent	Count
Very important	57.38%	70
Important	24.59%	30
Neutral	9.84%	12
Not that important	5.74%	7
Not important at all	2.46%	3
Totals	100%	122



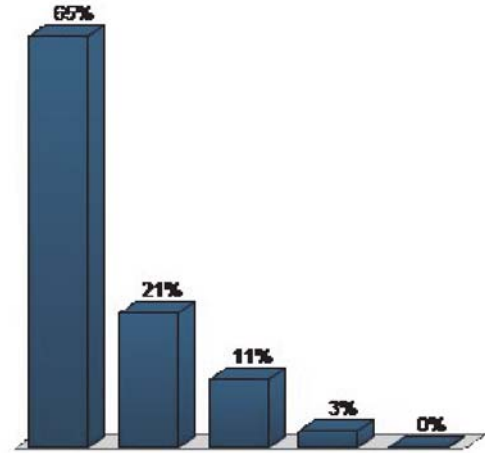
10. How important is it to you to maintain mobility and accommodate traffic levels while increasing access? (choose one): (Multiple Choice)

	Responses	
	Percent	Count
Very important	72.88%	86
Important	18.64%	22
Neutral	5.08%	6
Not that important	1.69%	2
Not important at all	1.69%	2
Totals	100%	118



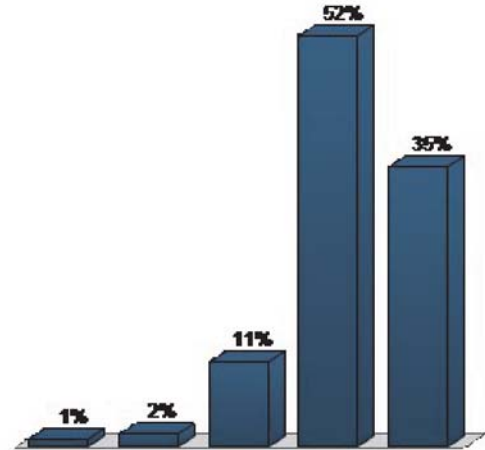
11. How important is it to you to gain support from affected stakeholders including land owners, developers, and business owners? (choose one): (Multiple Choice)

Responses		
	Percent	Count
Very important	65.18%	73
Important	21.43%	24
Neutral	10.71%	12
Not that important	2.68%	3
Not important at all	0%	0
Totals	100%	112



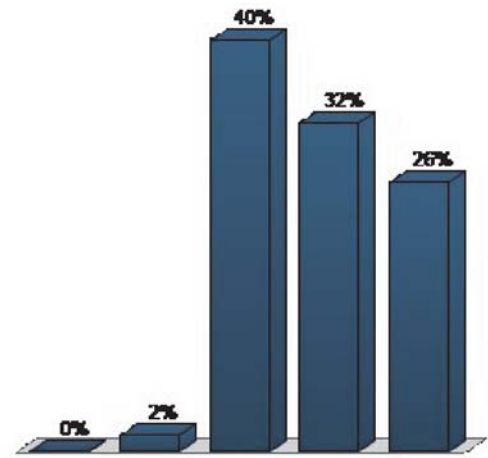
12. How would you rate the overall appearance of buildings along Bell Boulevard today? (choose one): (Multiple Choice)

Responses		
	Percent	Count
Very good	0.82%	1
Good	1.64%	2
Neutral	10.66%	13
Poor	51.64%	63
Very poor	35.25%	43
Totals	100%	122



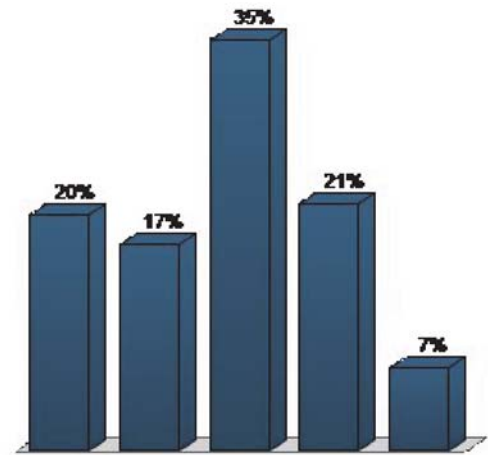
13. Is the current identity of Bell Blvd more modern or traditional? (choose one): (Multiple Choice)

Responses		
	Percent	Count
Modern	0%	0
Somewhat modern	1.64%	2
Neutral/neither	40.16%	49
Somewhat traditional	31.97%	39
Traditional	26.23%	32
Totals	100%	122



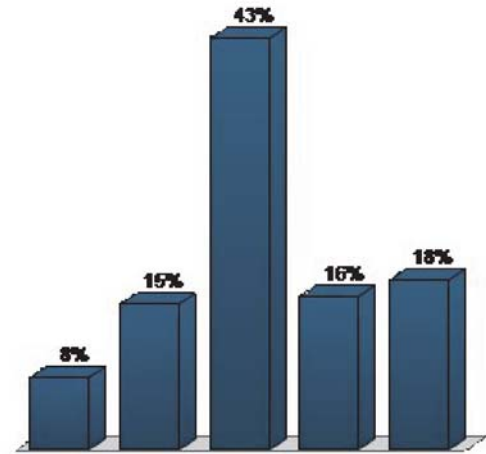
14. Is the current identity of Bell Blvd more eclectic or consistent? (choose one): (Multiple Choice)

Responses		
	Percent	Count
Eclectic	20%	23
Somewhat eclectic	17.39%	20
Neutral/neither	34.78%	40
Somewhat consistent	20.87%	24
Consistent	6.96%	8
Totals	100%	115



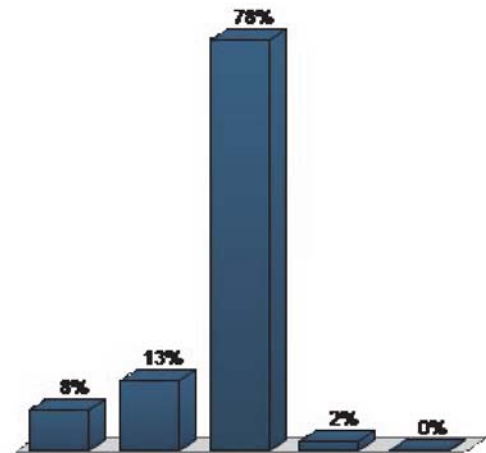
15. Is the current identity of Bell Blvd more active or passive? (choose one): (Multiple Choice)

Responses		
	Percent	Count
Active	7.63%	9
Somewhat active	15.25%	18
Neutral/neither	43.22%	51
Somewhat passive	16.1%	19
Passive	17.8%	21
Totals	100%	118



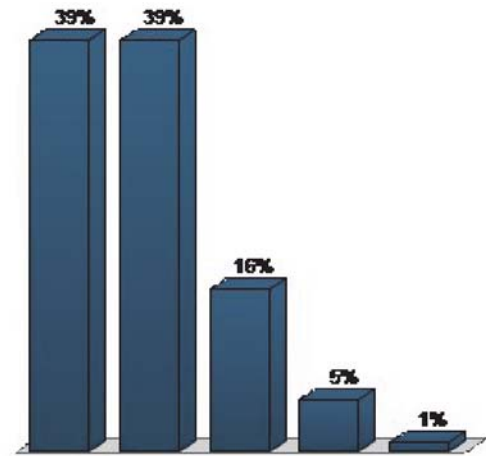
16. Is the current identity of Bell Blvd more timeless or trendy? (choose one): (Multiple Choice)

Responses		
	Percent	Count
Timeless	7.5%	9
Somewhat timeless	13.33%	16
Neutral/neither	77.5%	93
Somewhat trendy	1.67%	2
Trendy	0%	0
Totals	100%	120



17. Is the current identity of Bell Blvd more small town or big town? (choose one): (Multiple Choice)

Responses		
	Percent	Count
Small town	39.34%	48
Somewhat small town	39.34%	48
Neutral/neither	15.57%	19
Somewhat big town	4.92%	6
Big town	0.82%	1
Totals	100%	122



18. Although I may not agree with everything stated today, I feel that the overall process for the Bell Boulevard Master Plan is headed in the right direction. (choose one): (Multiple Choice)

Responses		
	Percent	Count
Strongly agree	32.26%	40
Agree	46.77%	58
Neutral	8.06%	10
Disagree	12.1%	15
Strongly disagree	0.81%	1
Totals	100%	124

